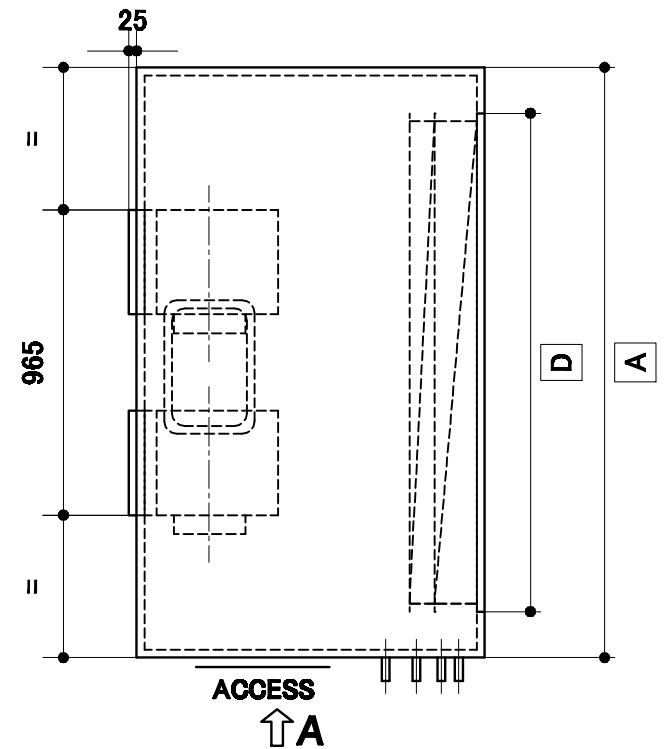


**ALHS 5, ALHS 7, ALHS 10**



**ALHS 15, ALHS 20**

MODEL NO	AIR FLOW L/S (NOM.)	DIMENSIONS (mm)				NUMBER OF		NET WT (kg)
		A	B	C	D	FAN	MOTOR	
ALHS 5	500	950	260	230	660	1	1	115
ALHS 7	700	1180	260	300	890	1	1	130
ALHS 10	1,000	1485	290	330	1195	1	1	165
ALHS 15	1,500	1865	290	965	1575	2	2	200
ALHS 20	2,000	2300	290	965	2030	2	2	255

**ALHS**

**GJ.WALKER** 2B GLASS ST RICHMOND  
 Ph (03) 9429 9811  
 Air Handling Systems Fax (03) 9429 1344