



ALEC Fan Coil Units

Low noise, low profile EC Fan Coil Units

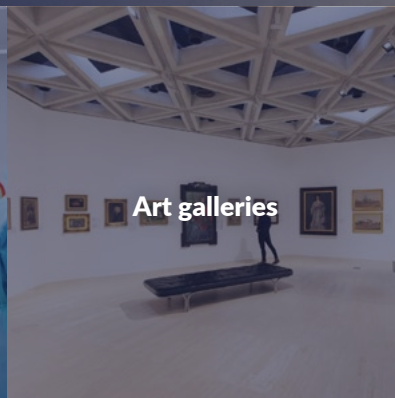
GJ Walker Air Handling Systems, established in 1975 is a leading manufacturer and supplier of air handling products in Australia. For nearly 50 years GJ Walker has been involved in the design and manufacture of specialist air handling systems to AS 3666 for a range of specialist applications including:



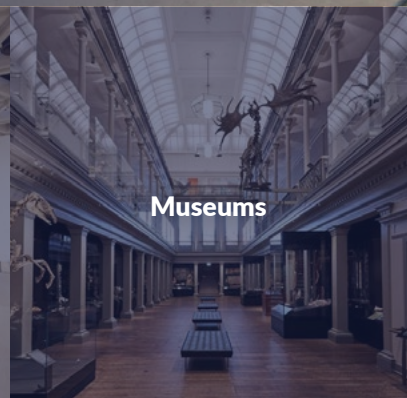
Pharmaceutical cleanrooms



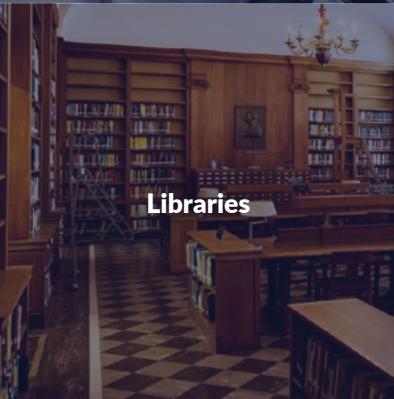
Hospitals



Art galleries



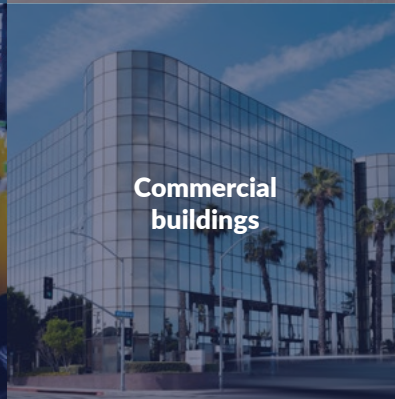
Museums



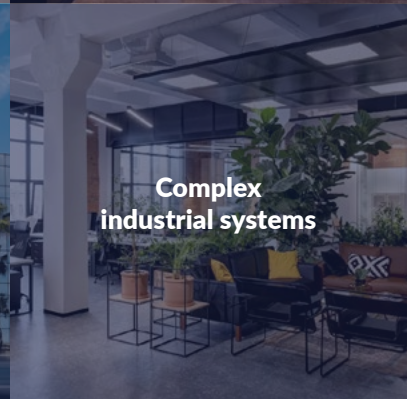
Libraries



Food industry



Commercial buildings



Complex industrial systems

With AHRI certification for the entire unit, our products have been developed over time to ensure quality and performance are maintained to the highest standard. We are known in the industry for exceptional service, delivery, and performance.

Our experienced team are looking forward to working with you on your next project.



Features

ALEC fan coil units are a low profile, high static unit designed with efficiency in mind. Built to Australian standards and to withstand Australian conditions, these units are driven by high efficiency EC fans ensuring low noise and a robust design with built in flexibility and features. Remote commissioning has been made easy through either BMS, PC monitoring or speed control using RS-485 enabling these fan coil units to be designed into a variety of projects.



Mounting brackets

Brackets provided as standard for ceiling mount. Bases and outrigger mounts are available for floor mounting as an option



Access panels

Access panels with grab handles provided on both sides



Cabinet (Single Skin)

Single skin low profile (375mm) cabinet is offered in 1.6mm galvanised sheet (PPGI)



Cabinet (Double Skin)

Constructed out of 25mm or 50mm polyurethane with 0.5mm internal and external prepainted galvanised sheet metal (PPGI)



Drip Tray

AS3666 compliant stainless steel drip tray provided as standard



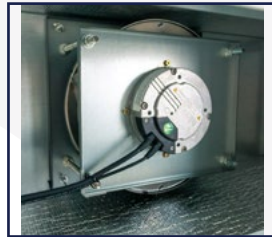
Coils

Supplied with coil protection as standard



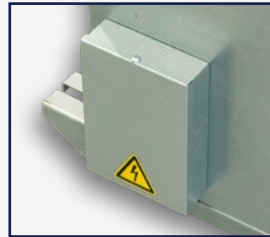
AHRI Certification

Tested as a complete unit the ALEC range is provided with the confidence of AHRI certification



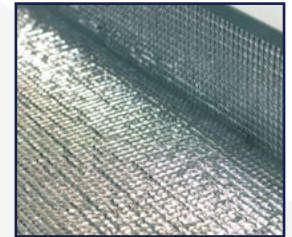
Fans

High efficiency, low noise, backward curved non overloading, electronically commutated (EC) fan(s) supplied. These fan(s) can be controlled via a potentiometer or connected to the building management system (BMS).



Electrical Connection

Units provided pre-wired to an external junction box for ease of installation



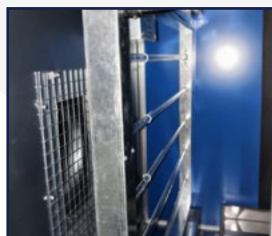
Insulation

Single skin units provided with 25mm or 50mm internal non hygroscopic polyolefin insulation with a tough foil covering



Unit Handing

Units are available as either right or left handed. Vertical style cabinets are available on request



UV Lights

UV lights can be fitted within the unit on request



Isolator

Isolators can be factory fitted as an optional item



Discharge Arrangement

Suitable for flexible or direct connection, the outlet can be a flanged or spigot connection as required



Electric Heaters

Optional factory fitted electric heater elements of various capacities available

ALEC 4 Row Coil Performance Data

| Model | ALEC 300 | ALEC 500 | ALEC 1000 | ALEC 1500 | |
|---------------------------|------------------------|----------|-----------|-----------|------|
| Air Flow (l/s) | 260 | 470 | 940 | 1410 | |
| Ext. Static Pressure (Pa) | 250 | 250 | 250 | 250 | |
| Coil Velocity (m/s) | 2.5 | 2.5 | 2.5 | 2.5 | |
| | | | | | |
| Cooling Conditions | Total Capacity (kW) | 4.1 | 8.0 | 16.0 | 25.0 |
| | Sensible Capacity (kW) | 3.4 | 6.3 | 12.6 | 19.3 |
| | Air On Temp (°C) | 25 | 25 | 25 | 25 |
| | Air Off Temp (°C) | 18 | 18 | 18 | 18 |
| | Water Temp In (°C) | 6 | 6 | 6 | 6 |
| | Water Temp Out (°C) | 12 | 12 | 12 | 12 |
| | Rows | 4 | 4 | 4 | 4 |
| | Water Flow Rate (l/s) | 0.16 | 0.32 | 0.64 | 0.99 |
| | Water Velocity (m/s) | 0.44 | 0.86 | 0.86 | 0.99 |
| | Water Pressure (kPa) | 3.4 | 14.9 | 13.3 | 26.9 |

| | | | | | |
|--------------------|-----------------------|------|------|------|------|
| Heating Conditions | Total Capacity (kW) | 5.0 | 8.5 | 17.5 | 25.9 |
| | Air On Temp (°C) | 20 | 20 | 20 | 20 |
| | Air Off Temp (°C) | 35.7 | 34.8 | 35.2 | 34.5 |
| | Water Temp In (°C) | 80 | 80 | 80 | 80 |
| | Water Temp Out (°C) | 60 | 60 | 60 | 60 |
| | Rows | 1 | 1 | 1 | 1 |
| | Water Flow Rate (l/s) | 0.06 | 0.10 | 0.22 | 0.31 |
| | Water Velocity (m/s) | 0.99 | 0.84 | 1.16 | 0.62 |
| | Water Pressure (kPa) | 12.7 | 7.5 | 15.6 | 3.3 |

| | | | | | |
|-------------|------------------|---------|---------|---------|---------|
| Fan Details | Type | EC Plug | EC Plug | EC Plug | EC Plug |
| | No. of Fans | 1 | 1 | 2 | 3 |
| | Diameter (mm) | 225 | 250 | 250 | 250 |
| | Motor Power (kW) | 0.17 | 0.50 | 0.50 | 0.50 |
| | Voltage (V) | 230 | 230 | 230 | 230 |
| | Amps (A) | 1.4 | 2.2 | 2.2 | 2.2 |
| | Phase | 1 | 1 | 1 | 1 |
| | Frequency (Hz) | 50 | 50 | 50 | 50 |

| | | Single Skin | | | |
|-------------|--------------------|-------------|------|------|------|
| Attributes | Height (mm) | 375 | 375 | 375 | 500 |
| | Width (mm) | 740 | 1030 | 1770 | 1970 |
| | Length (mm) | 1000 | 1000 | 1000 | 1000 |
| | Weight (kg) | 60 | 85 | 150 | 200 |
| | Double Skin (25mm) | | | | |
| | Height (mm) | 425 | 425 | 425 | 550 |
| | Width (mm) | 750 | 1040 | 1780 | 1980 |
| | Length (mm) | 1000 | 1000 | 1000 | 1000 |
| | Weight (kg) | 65 | 95 | 165 | 220 |
| | Double Skin (50mm) | | | | |
| | Height (mm) | 475 | 475 | 475 | 600 |
| | Width (mm) | 800 | 1090 | 1830 | 2030 |
| Length (mm) | 1050 | 1050 | 1050 | 1050 | |
| Weight (kg) | 75 | 105 | 185 | 245 | |

ALEC 6 Row Coil Performance Data

| Model | ALEC 300 | ALEC 500 | ALEC 1000 | ALEC 1500 | |
|---------------------------|------------------------|----------|-----------|-----------|------|
| Air Flow (l/s) | 260 | 470 | 940 | 1410 | |
| Ext. Static Pressure (Pa) | 250 | 250 | 250 | 250 | |
| Coil Velocity (m/s) | 2.5 | 2.5 | 2.5 | 2.5 | |
| | | | | | |
| Cooling Conditions | Total Capacity (kW) | 5.7 | 10.2 | 21.6 | 31.2 |
| | Sensible Capacity (kW) | 4.2 | 7.5 | 15.6 | 22.9 |
| | Air On Temp (°C) | 25 | 25 | 25 | 25 |
| | Air Off Temp (°C) | 18 | 18 | 18 | 18 |
| | Water Temp In (°C) | 6 | 6 | 6 | 6 |
| | Water Temp Out (°C) | 12 | 12 | 12 | 12 |
| | Rows | 6 | 6 | 6 | 6 |
| | Water Flow Rate (l/s) | 0.23 | 0.40 | 0.86 | 1.24 |
| | Water Velocity (m/s) | 0.61 | 0.72 | 1.16 | 0.83 |
| | Water Pressure (kPa) | 8.6 | 10.2 | 29.9 | 12.9 |

| | | | | | |
|--------------------|-----------------------|------|------|------|------|
| Heating Conditions | Total Capacity (kW) | 5.0 | 8.5 | 17.5 | 25.9 |
| | Air On Temp (°C) | 20 | 20 | 20 | 20 |
| | Air Off Temp (°C) | 35.7 | 34.8 | 35.2 | 33.0 |
| | Water Temp In (°C) | 80 | 80 | 80 | 80 |
| | Water Temp Out (°C) | 60 | 60 | 60 | 60 |
| | Rows | 1 | 1 | 1 | 1 |
| | Water Flow Rate (l/s) | 0.06 | 0.10 | 0.22 | 0.32 |
| | Water Velocity (m/s) | 0.99 | 0.84 | 1.16 | 0.64 |
| | Water Pressure (kPa) | 12.7 | 7.5 | 15.6 | 3.5 |

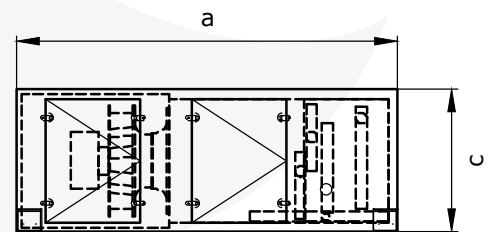
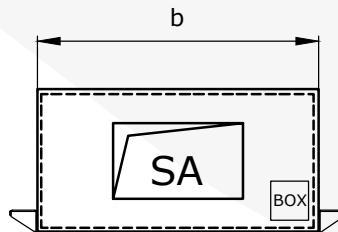
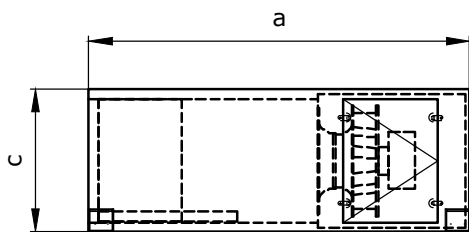
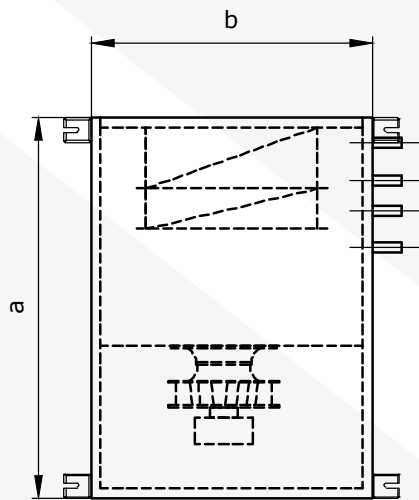
| | | | | | |
|-------------|------------------|---------|---------|---------|---------|
| Fan Details | Type | EC Plug | EC Plug | EC Plug | EC Plug |
| | No. of Fans | 1 | 1 | 2 | 3 |
| | Diameter (mm) | 225 | 250 | 250 | 250 |
| | Motor Power (kW) | 0.17 | 0.50 | 0.50 | 0.50 |
| | Voltage (V) | 230 | 230 | 230 | 230 |
| | Amps (A) | 1.4 | 2.2 | 2.2 | 2.2 |
| | Phase | 1 | 1 | 1 | 1 |
| | Frequency (Hz) | 50 | 50 | 50 | 50 |

| | | Single Skin | | | |
|-------------|--------------------|-------------|------|------|------|
| Attributes | Height (mm) | 375 | 375 | 375 | 500 |
| | Width (mm) | 740 | 1030 | 1770 | 1970 |
| | Length (mm) | 1000 | 1000 | 1000 | 1000 |
| | Weight (kg) | 60 | 85 | 150 | 200 |
| | Double Skin (25mm) | | | | |
| | Height (mm) | 425 | 425 | 425 | 550 |
| | Width (mm) | 750 | 1040 | 1780 | 1980 |
| | Length (mm) | 1000 | 1000 | 1000 | 1000 |
| | Weight (kg) | 65 | 95 | 165 | 220 |
| | Double Skin (50mm) | | | | |
| | Height (mm) | 475 | 475 | 475 | 600 |
| | Width (mm) | 800 | 1090 | 1830 | 2030 |
| Length (mm) | 1050 | 1050 | 1050 | 1050 | |
| Weight (kg) | 75 | 105 | 185 | 245 | |

ALEC Single Skin



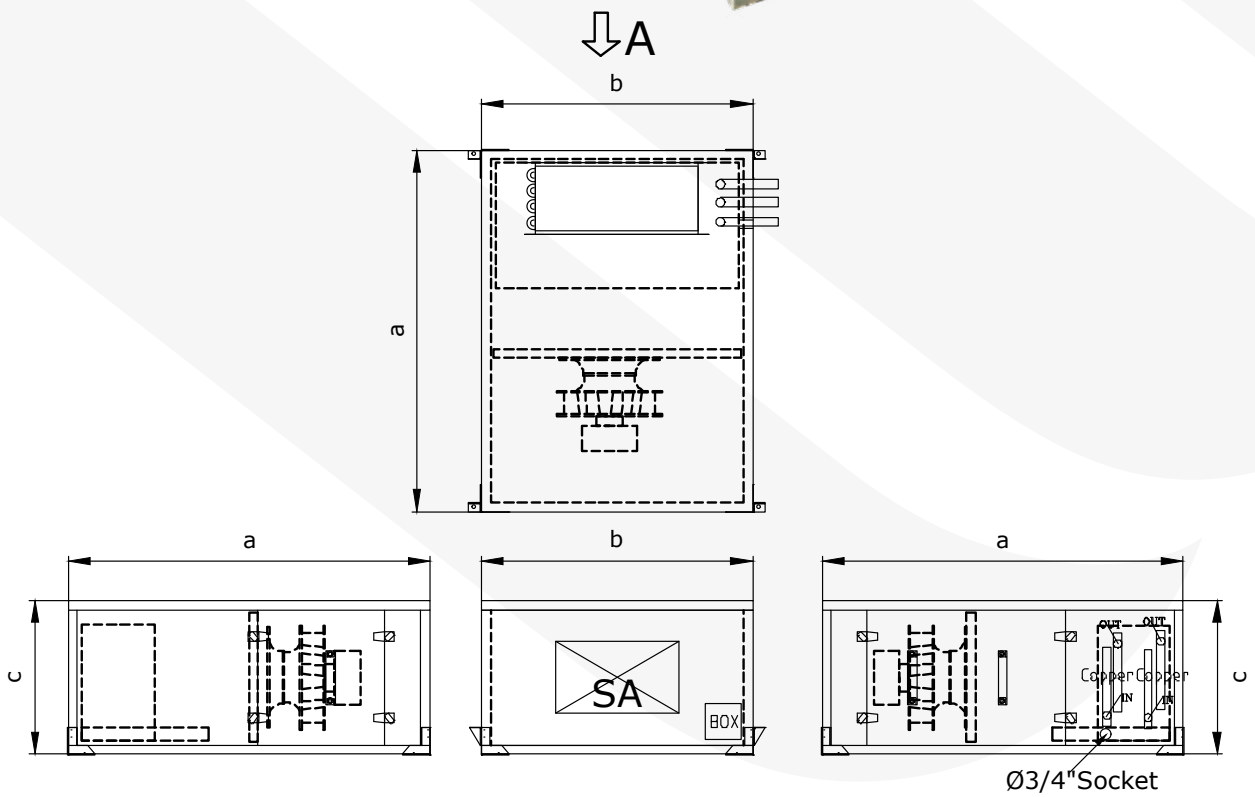
↓ A



| ALEC Single Skin 25mm | | | | |
|-----------------------|------|------|-----|---------|
| Model | a | b | c | Fan no. |
| ALEC 300 | 1000 | 740 | 375 | 1 |
| ALEC 500 | 1000 | 1030 | 375 | 1 |
| ALEC 1000 | 1000 | 1770 | 375 | 2 |
| ALEC 1500 | 1000 | 1970 | 500 | 3 |

| ALEC Single Skin 50mm | | | | |
|-----------------------|------|------|-----|---------|
| Model | a | b | c | Fan no. |
| ALEC 300 | 1050 | 790 | 425 | 1 |
| ALEC 500 | 1050 | 1080 | 425 | 1 |
| ALEC 1000 | 1050 | 1820 | 425 | 2 |
| ALEC 1500 | 1050 | 2020 | 550 | 3 |

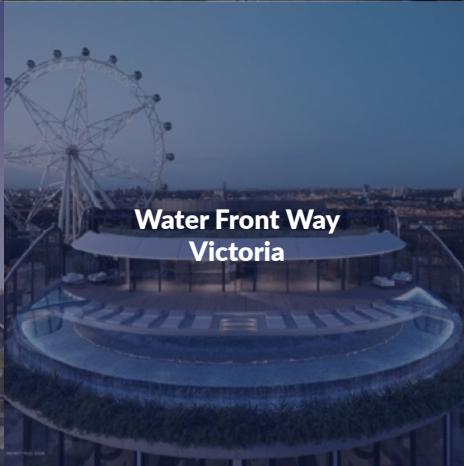
ALEC Double Skin



| ALEC Double Skin 25mm | | | | |
|-----------------------|------|------|-----|---------|
| Model | a | b | c | Fan no. |
| ALEC 300 | 1000 | 750 | 425 | 1 |
| ALEC 500 | 1000 | 1040 | 425 | 1 |
| ALEC 1000 | 1000 | 1780 | 425 | 2 |
| ALEC 1500 | 1000 | 1980 | 550 | 3 |

| ALEC Double Skin 50mm | | | | |
|-----------------------|------|------|-----|---------|
| Model | a | b | c | Fan no. |
| ALEC 300 | 1050 | 800 | 475 | 1 |
| ALEC 500 | 1050 | 1090 | 475 | 1 |
| ALEC 1000 | 1050 | 1830 | 475 | 2 |
| ALEC 1500 | 1050 | 2030 | 600 | 3 |

Recent projects



Victorian and Tasmanian office

6-10 Souffi Place
Dandenong South VIC 3175

Ph: +61 3 9706 6313

Queensland office

Unit 4, 53-57 Link Drive
Yatala Qld 4207

Ph: +61 7 3804 6833

New South Wales and Australian Capital Territory office

23a/70 Holbeche Road
Arndell Park NSW 2148

Ph: +61 2 8968 9347

Western Australian, South Australian and Northern Territory office

Integrity House, 67 Howe Street
Osborne Park WA 6017

Ph: +61 8 9202 6821