



GJWALKER
AIR HANDLING SYSTEMS

AHRI CERTIFIED®
www.ahridirectory.org

Air-Cooling and Air-Heating Coils
AHRI Standard 410

CMLH range

GJ Walker Company Profile

GJ Walker was established in 1975 with an aim to becoming a major supplier of air handling products in Australia. We maintain a small company philosophy with a highly skilled team of professionals providing personal service and timely performance.

The CMLH/CMDH range have been used extensively throughout Australia on many of the nation's largest and most sophisticated HVAC projects. The product is both flexible, wide ranging and can be customised. The team at GJ Walker can assist in selecting and providing the best solution to suit your project needs.



Barangaroo



Gosford Hospital



International Convention Centre,
Darling Harbour Sydney



Fiona Stanley Hospital

Exceptional service and quality solutions that
are cost effective, efficient and save energy.

CMLH are a large capacity direct drive low profile fan coil units designed to incorporate your most important requirements; a shallow profile, low noise level and adjustable fan speed for commissioning and tenancy changes.

CABINET:

Ruggedly constructed 1.2mm thick galvanised sheet steel cabinet production units are supplied unpainted. Alternatively double skin can be supplied

INSULATION:

The entire interior is insulated with 25mm thick polyethylene closed cell insulation. A stainless steel condensate tray is insulated with 6mm thick closed cell insulation. Double skin units are constructed from twin 0.6mm powder coated sheet metal with 25 or 50mm polyurethane insulation.

MOTORS & DRIVES:

DIRECT DRIVE - EC: highly efficient variable speed single phase. Wired potentiometer can be fitted for speed control or signal can be applied through BMS.

DIRECT DRIVE - AC: three speed variable speed single phase open type motor.

FAN WHEELS:

All fans are forward curved type and are statically and dynamically balanced.

DISCHARGE ARRANGEMENT:

Horizontal and vertical type units have spigot discharges. Double deflection grilles can be fitted to horizontal unit.

HANDING OF UNITS:

Units are available as either left or right hand. Vertical style cabinets as a special can also be manufactured.

COILS GENERAL:

Coils are rated to AHRI for guaranteed performance. All coils have 10mm copper tube with Aluminium ripple fins. Epoxy coil corrosion protection is a standard feature.

Bleed valves are extended to a convenient location for ease of install and commissioning of equipment.

COOLING COIL:

Cooling coils are available for water, DX or Glycol. Coil corrosion finish is standard. Choice can be made between 3,4 or 6 row coils.

HEATING COIL:

One and two row hot water coils are available.

ELECTRIC ELEMENTS:

Both traditional finned heaters and PTC heaters are an option. When installed both manual and auto safety hi-limits are provided (air pressure switch excluded).

ACCESS PANELS:

Removable panels are provided on both drive side and opposite drive side of the unit for universal access handling.

FILTERS:

A range of panel filters can be accommodated on the CMLH unit, please contact a GJW sales representative for assistance on selection and the required removal system.

COMPUTER SELECTIONS:

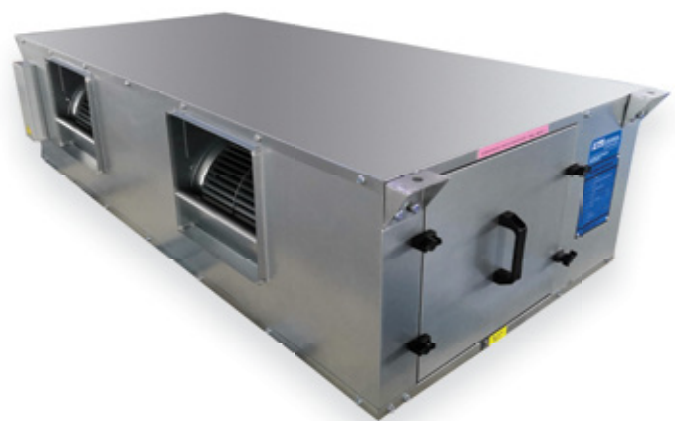
Due to advances in coil selection procedures, we are able to select units accurately and to provide ratings of units over a wide range of duties using computer outputs on both fan and coil selections. Coils selections are completed to AHRI certification standards.

We would be pleased to provide you with printouts for inclusion in your project file and to evaluate unit performance at conditions other than design.

PRODUCT OVERVIEW

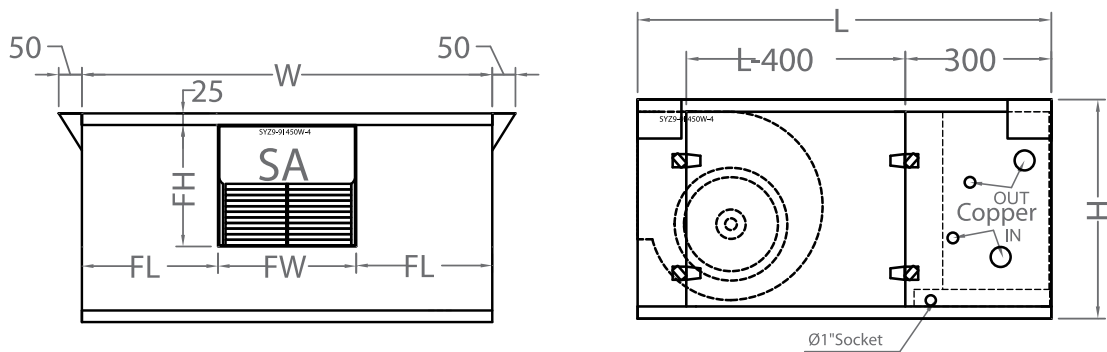
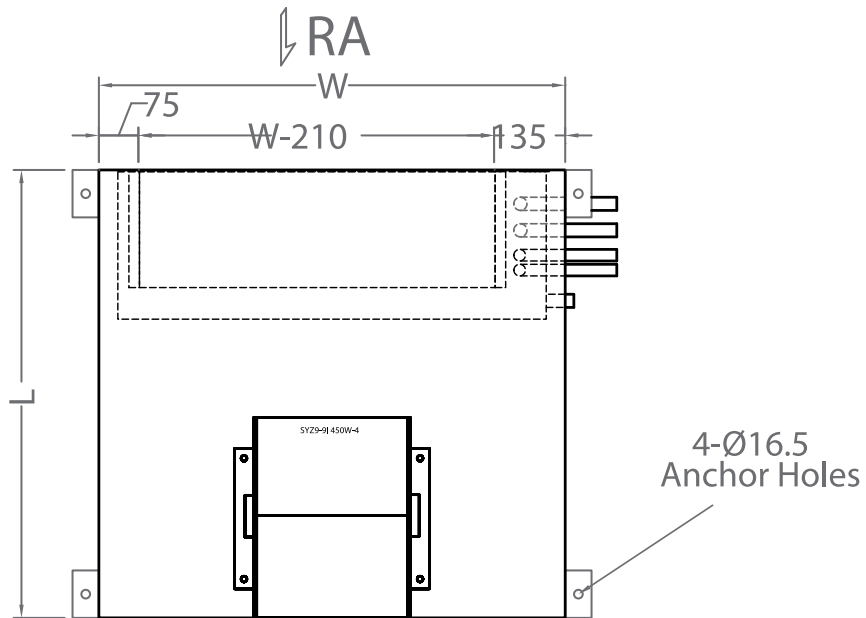
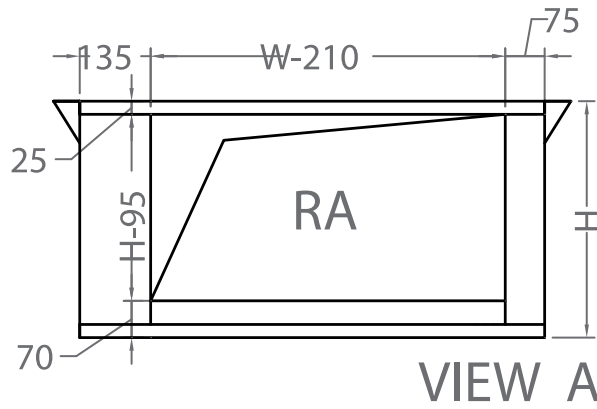
FCU	Fan	Airflow (l/s)	External Static (Pa)	Airflow (l/s)	External Static (Pa)	Casing	Concealed, Horizontal	Concealed, Vertical	Expose, Horizontal	Expose, Vertical
	Fan Model	CM##: 3-speed range (240/1/50)	External Static (Pa)	Airflow (l/s)	External Static (Pa)	FCU Models	CMLH 300	CMLV 300	CMDH 300	CMDV 300
	Duty Point 1	SYZ7-7I; 0.2kW-4P; 1.8A	230	150	Up to 110	Casing & Insulation (mm)	25 Perforated Foil, G.I.	25 Perforated Foil, G.I.	25 Polyurethane, D.S.	25 Polyurethane, D.S.
	Duty Point 2		180	250	Up to 280	Dimension LxWxH (mm)	800 x 610 x 450	450 x 610 x 900	800 x 610 x 480	450 x 610 x 900
	Duty Point 3		130	300	Up to 390	Nominal Weight (kg)	50	50	60	60
	Fan Model	SYZ9-7III; 0.375kW-4P; 4.2A	External Static (Pa)	Airflow (l/s)	External Static (Pa)	FCU Models	CMLH 400	CMLV 400	CMDH 400	CMDV 400
	Duty Point 1		320	350	Up to 440	Casing & Insulation (mm)	25 Perforated Foil, G.I.	25 Perforated Foil, G.I.	25 Polyurethane, D.S.	25 Polyurethane, D.S.
	Duty Point 2		280	400	Up to 420	Dimension LxWxH (mm)	850 x 710 x 450	450 x 710 x 900	850 x 710 x 480	480 x 710 x 900
	Duty Point 3		220	450	Up to 400	Nominal Weight (kg)	60	60	70	70
	Fan Model	SYZ9-9I; 0.45kW-4P; 5.6A	External Static (Pa)	Airflow (l/s)	External Static (Pa)	FCU Models	CMLH 600	CMLV 600	CMDH 600	CMDV 600
	Duty Point 1		300	500	Up to 620	Casing & Insulation (mm)	25 Perforated Foil, G.I.	25 Perforated Foil, G.I.	25 Polyurethane, D.S.	25 Polyurethane, D.S.
	Duty Point 2		250	600	Up to 570	Dimension LxWxH (mm)	850 x 885 x 450	450 x 885 x 900	850 x 885 x 480	480 x 885 x 900
	Duty Point 3		210	700	Up to 470	Nominal Weight (kg)	70	70	80	80
	Fan Model	SYZ9-7III x2; 0.375kW-4P x2; 4.2A x2	External Static (Pa)	Airflow (l/s)	External Static (Pa)	FCU Models	CMLH 900	CMLV 900	CMDH 900	CMDV 900
	Duty Point 1		320	800	Up to 420	Casing & Insulation (mm)	25 Perforated Foil, G.I.	25 Perforated Foil, G.I.	25 Polyurethane, D.S.	25 Polyurethane, D.S.
	Duty Point 2		270	900	Up to 400	Dimension LxWxH (mm)	850 x 1210 x 450	450 x 1210 x 900	850 x 1210 x 480	480 x 1210 x 900
	Duty Point 3		220	1000	Up to 370	Nominal Weight (kg)	100	100	110	110
	Fan Model	SYZ9-9I x2; 0.45kW-4P x2; 5.6A x2	External Static (Pa)	Airflow (l/s)	External Static (Pa)	FCU Models	CMLH 1200	CMLV 1200	CMDH 1200	CMDV 1200
	Duty Point 1		300	1100	Up to 400	Casing & Insulation (mm)	25 Perforated Foil, G.I.	25 Perforated Foil, G.I.	25 Polyurethane, D.S.	25 Polyurethane, D.S.
	Duty Point 2		250	1200	Up to 370	Dimension LxWxH (mm)	850 x 1535 x 450	450 x 1535 x 900	850 x 1535 x 480	480 x 1535 x 900
	Duty Point 3		210	1300	Up to 330	Nominal Weight (kg)	130	130	140	140
	Fan Model	SYZ10-10II x2; 0.55kW-4P x2; 4.9A x2	External Static (Pa)	Airflow (l/s)	External Static (Pa)	FCU Models	CMLH 1500	CMLV 1500	CMDH 1500	CMDV 1500
	Duty Point 1		310	1400	Up to 500	Casing & Insulation (mm)	25 Perforated Foil, G.I.	25 Perforated Foil, G.I.	25 Polyurethane, D.S.	25 Polyurethane, D.S.
	Duty Point 2		280	1500	Up to 400	Dimension LxWxH (mm)	850 x 1785 x 450	450 x 1785 x 900	850 x 1785 x 480	480 x 1785 x 900
	Duty Point 3		260	1600	Up to 320	Nominal Weight (kg)	150	150	160	160
	Fan Model	SYZ10-10I x2; 0.55kW-4P x2; 4.9A x2	External Static (Pa)	Airflow (l/s)	External Static (Pa)	FCU Models	CMLH 1800	CMLV 1800	CMDH 1800	CMDV 1800
	Duty Point 1		300	1800	Up to 420	Casing & Insulation (mm)	25 Perforated Foil, G.I.	25 Perforated Foil, G.I.	25 Polyurethane, D.S.	25 Polyurethane, D.S.
	Duty Point 2		260	1900	Up to 360	Dimension LxWxH (mm)	910 x 1785 x 550	500 x 1785 x 1000	910 x 1785 x 580	530 x 1785 x 1000
	Duty Point 3		230	2000	Up to 300	Nominal Weight (kg)	180	180	190	190

CMDH 1200
Cooling only



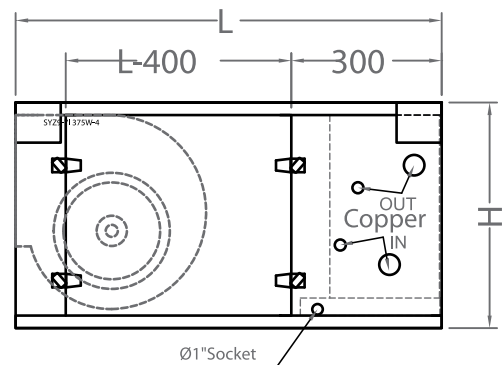
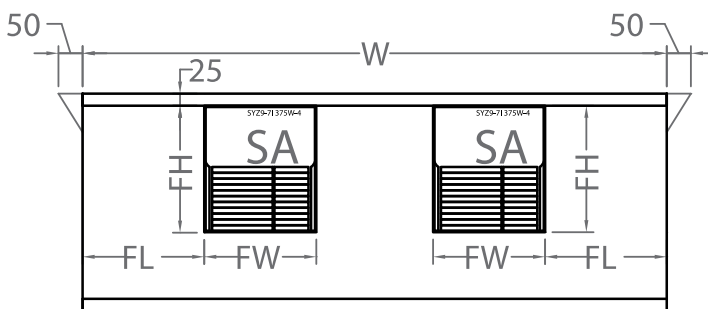
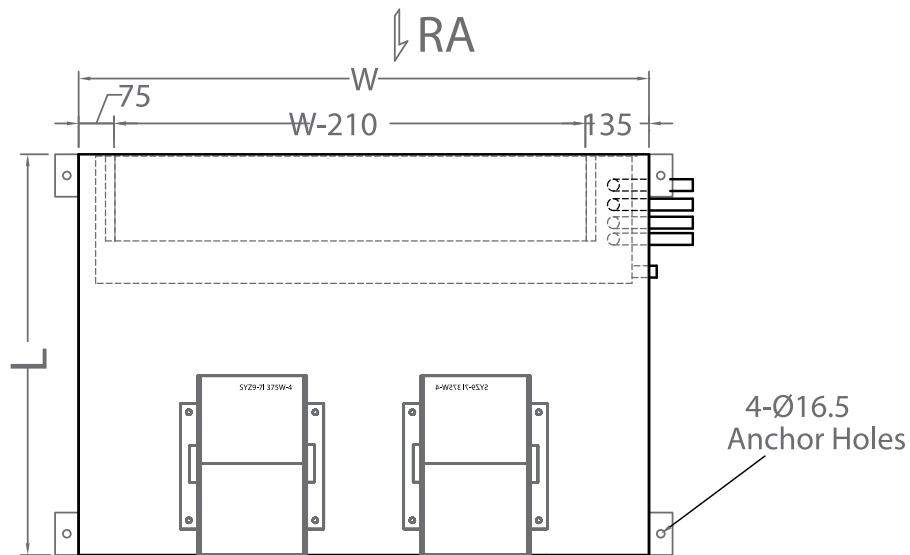
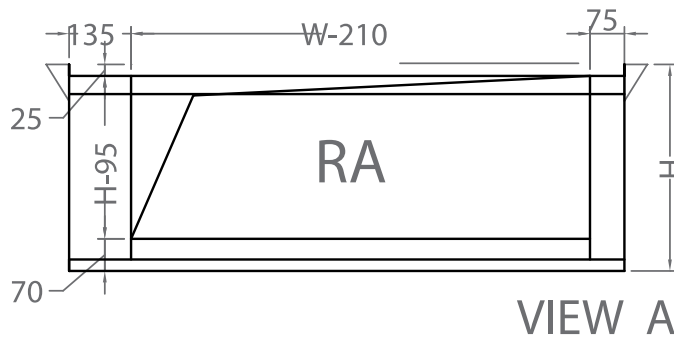
CMLH 1500
Cooling and heating

DIAGRAM A



Dimension (mm)	W	H	L	FW	FH	FL
CMLH 300	610	450	800	232	208	189
CMLH 400	710	450	850	232	262	239
CMLH 600	885	450	850	298	262	294

DIAGRAM B



Dimension (mm)	W	H	L	FW	FH	FL
CMLH 900	1210	450	850	232	262	252
CMLH 1200	1535	450	850	298	262	292
CMLH 1500	1785	450	850	334	287	358
CMLH 1800	1785	550	910	331	291	323

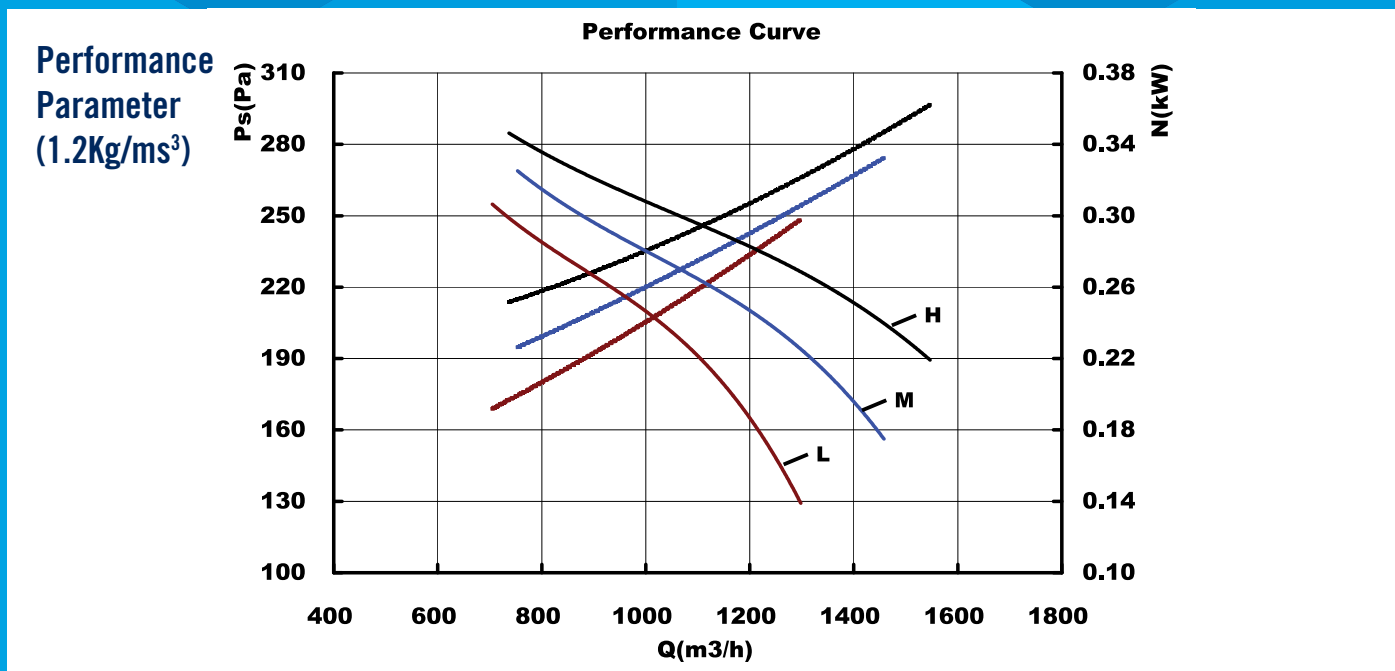
Nominal Airflow: 300 l/s; Face Velocity: 1.85 m/s; Cooling Entering Air Temperature: 24°C DB/17°C WB

Rows / Circuit	APD (Pa)	"LWT T (°C)	WPD (kPa)	6°C EWT			7°C EWT		
				TC/SC (kW)	LAT (°C)	WF (l/s)	TC/SC (kW)	LAT (°C)	WF (l/s)
3/3	49	+5	28	4.3/3.6	14.2/12.7	0.20	3.9/3.4	14.7/13.1	0.19
		+6	18	4.0/3.5	14.5/13.0	0.16	3.6/3.3	15.0/13.4	0.14
		+7	11	3.7/3.3	14.9/13.3	0.12	3.1/3.1	15.5/13.9	0.11
4/4	66	+5	23	5.1/4.1	12.7/11.8	0.24	4.7/3.9	13.2/12.3	0.22
		+6	15	4.8/4.0	13.1/12.1	0.19	4.3/3.8	13.6/12.7	0.17
		+7	10	4.4/3.9	13.5/12.5	0.15	4.0/3.7	14.0/13.0	0.14
6/8	99	+5	7	6.1/4.8	11.0/10.6	0.29	5.5/4.5	11.7/11.3	0.26
		+6	4	5.7/4.6	11.5/11.2	0.22	5.1/4.3	12.2/11.8	0.20
		+7	3	5.2/4.4	12.0/11.7	0.18	4.7/4.2	12.6/12.3	0.16

Nominal Airflow: 300 l/s; Face Velocity: 1.85 m/s; Heating Entering Air Temperature: 21°C DB

Rows / Circuit	APD (Pa)	LWT ΔT (°C)	WPD (kPa)	80°C EWT			70°C EWT		
				TC (kW)	LAT (°C)	WF (l/s)	TC (kW)	LAT (°C)	WF (l/s)
1/1	11	-20	21	5.7	36.7	0.07	4.4	33.1	0.05
		-25	12	5.3	35.5	0.05	4.0	31.9	0.04
		-30	7	4.8	34.1	0.04	3.5	30.6	0.03
2/2	22	-20	15	9.5	47.0	0.12	7.4	41.3	0.09
		-25	9	8.9	45.2	0.09	6.7	39.4	0.07
		-30	5	8.1	43.1	0.07	5.9	37.1	0.05

Forward Curved Fan: Static Pressure = External Static Pressure + Filters Pressure Drop + Coil Air Pressure Drop



Alternative fans are available for higher static pressure. Please email enquiry to sales representatives.

SWL (dB) at High Speed	Airflow	125 Hz	250 Hz	500 Hz	1000 Hz	2000 Hz	4000 Hz	8000 Hz	dBA
	200		58	65	63	66	63	62	53
300		55	64	63	68	65	64	57	72

Nominal Fan & Motor Data: SYZ7-71; 0.2 kW; 4 Pole; 1.8 A; 240/1/50

Nomenclature

Total Cooling Capacity (kW): TC
Sensible Cooling Capacity (kW): SC
Total/Sensible Heating Capacity (kW): HC
Horizontal: HZ
Vertical: VT

Water Flow (l/s): WF
Water Pressure Drop (kPa): WPD
Entering Water Temperature (°C): EWT
Ducted: DT
Double Skin: EX

Air Pressure Drop (Pa): APD
Leaving Air Temperature (°C DB / °C WB): LAT
Sound Power Level (dB): SWL
25mm or 50mm Polyurethane: PU
25mm or 50mm Polyethylene: PE

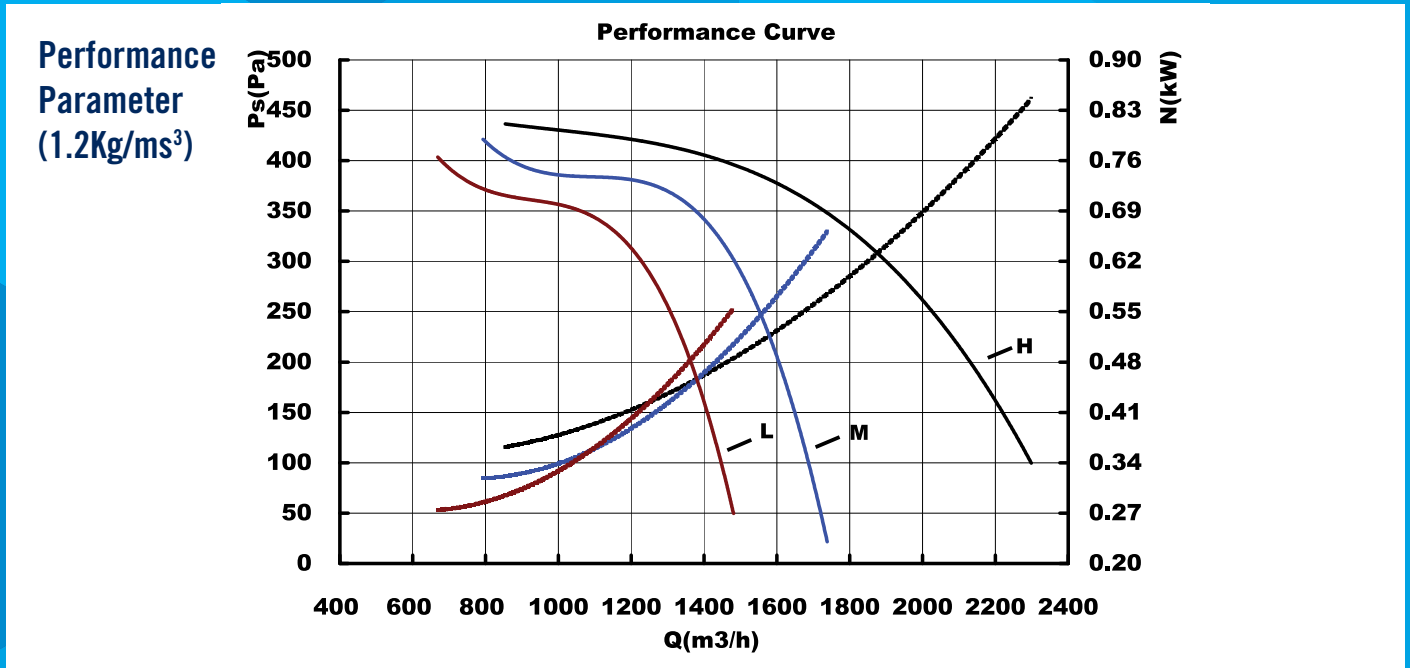
Nominal Airflow: 400 l/s; Face Velocity: 1.97 m/s; Cooling Entering Air Temperature: 24°C DB/17°C WB

Rows / Circuit	APD (Pa)	LWT ΔT (°C)	WPD (kPa)	6°C EWT			7°C EWT		
				TC/SC (kW)	LAT (°C)	WF (l/s)	TC/SC (kW)	LAT (°C)	WF (l/s)
3/3	55	+5	7	5.1/4.5	14.8/13.2	0.24	4.6/4.3	15.2/13.6	0.22
		+6	5	4.7/4.3	15.1/13.5	0.19	4.0/4.0	15.8/14.0	0.16
		+7	3	4.0/4.0	15.8/14.0	0.14	3.7/3.7	16.4/14.3	0.13
4/8	74	+5	6	6.1/5.2	13.4/12.4	0.29	5.6/5.0	13.8/12.8	0.26
		+6	3	5.7/5.0	13.8/12.7	0.22	5.1/4.8	14.2/13.2	0.20
		+7	2	5.2/4.8	14.1/13.1	0.18	4.5/4.5	14.9/13.7	0.15
6/8	111	+5	14	8.3/6.4	10.9/10.5	0.40	7.4/6.0	11.6/11.2	0.35
		+6	9	7.7/6.2	11.4/11.0	0.31	7.0/5.8	12.0/11.6	0.28
		+7	6	7.2/5.9	11.9/11.5	0.24	6.4/5.6	12.5/12.1	0.22

Nominal Airflow: 400 l/s; Face Velocity: 1.97 m/s; Heating Entering Air Temperature: 21°C DB

Rows / Circuit	"APD	"LWT ΔT (°C)"	WPD (kPa)	80°C EWT			70°C EWT		
				TC (kW)	LAT (°C)	WF (l/s)	TC (kW)	LAT (°C)	WF (l/s)
1/1	12	-20	29	7.3	36.0	0.08	5.9	33.1	0.07
		-25	22	7.0	35.3	0.07	5.2	31.7	0.05
		-30	14	6.4	34.1	0.05	4.7	30.6	0.04
2/2	24	-20	28	12.6	46.8	0.16	9.8	41.1	0.12
		-25	16	11.7	45.0	0.12	9.0	39.4	0.09
		-30	10	10.8	43.1	0.09	7.9	37.3	0.06

Forward Curved Fan: Static Pressure = External Static Pressure + Filters Pressure Drop + Coil Air Pressure Drop



Alternative fans are available for higher static pressure. Please email enquiry to sales representatives.

SWL (dB) at High Speed	Airflow	125 Hz	250 Hz	500 Hz	1000 Hz	2000 Hz	4000 Hz	8000 Hz	dBA
	300		63	69	67	70	69	67	62
400		61	68	67	71	70	68	64	76

Nominal Fan & Motor Data: SYZ9-7III; 0.375 kW; 4 Pole; 4.2 A; 240/1/50

Nomenclature

Total Cooling Capacity (kW): TC
 Sensible Cooling Capacity (kW): SC
 Total/Sensible Heating Capacity (kW): HC
 Horizontal: HZ
 Vertical: VT

Water Flow (l/s): WF
 Water Pressure Drop (l/s): WPD
 Entering Water Temperature (°C): EWT
 Ducted: DT
 Double Skin: EX

Air Pressure Drop (Pa): APD
 Leaving Air Temperature (°C DB / °C WB): LAT
 Sound Power Level (dB): SWL
 25mm or 50mm Polyurethane: PU
 25mm or 50mm Polyethylene: PE

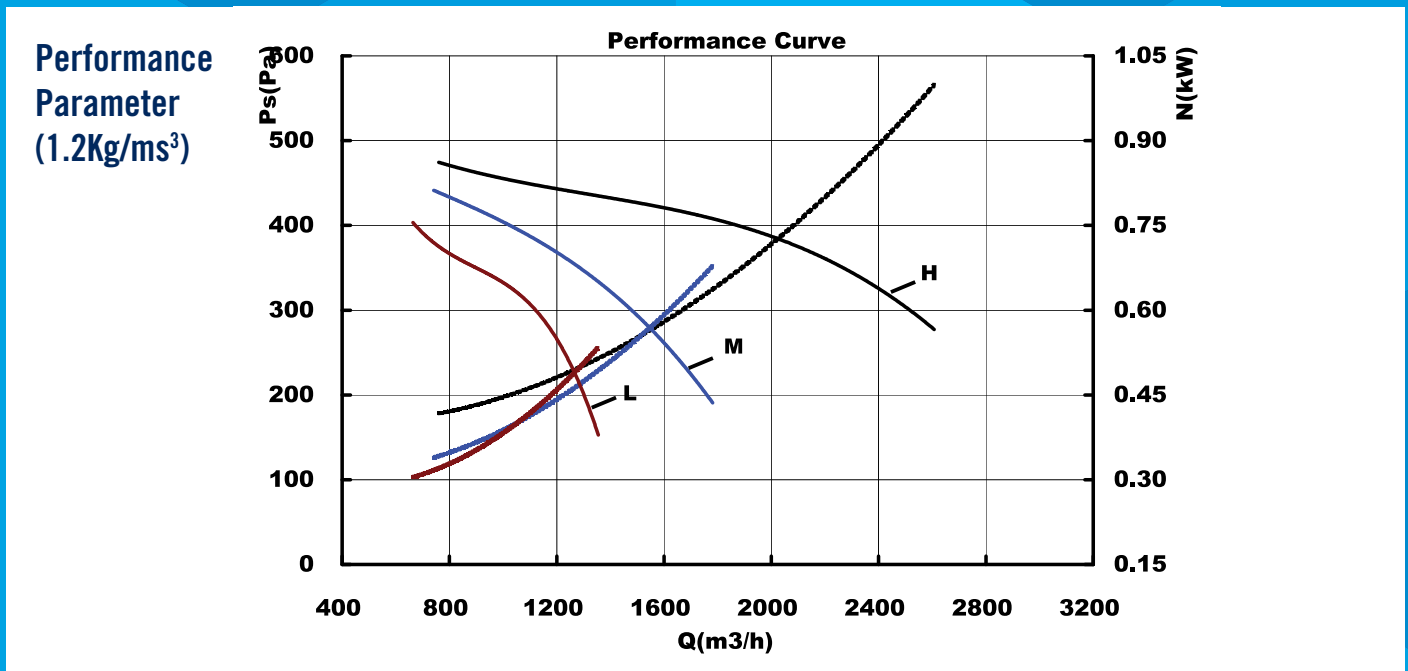
Nominal Airflow: 600 l/s; Face Velocity: 2.19 m/s; Cooling Entering Air Temperature: 24°C DB/17°C WB

Rows / Circuit	APD (Pa)	LWT ΔT (°C)	WPD (kPa)	6°C EWT			7°C EWT		
				TC/SC (kW)	LAT (°C)	WF (l/s)	TC/SC (kW)	LAT (°C)	WF (l/s)
3/6	67	+5	19	7.8/6.7	14.8/13.1	0.37	7.1/6.4	15.2/13.5	0.34
		+6	12	7.2/6.5	15.1/13.4	0.29	6.0/6.0	15.8/14.0	0.24
		+7	8	6.7/6.3	15.4/13.7	0.23	5.7/5.7	16.2/14.2	0.20
4/8	89	+5	15	9.5/7.9	13.3/12.2	0.45	8.5/7.5	13.8/12.7	0.40
		+6	9	8.7/7.6	13.7/12.6	0.35	7.9/7.2	14.1/13.0	0.31
		+7	6	8.1/7.3	14.0/12.9	0.28	6.8/6.8	14.7/13.6	0.23
6/8	133	+5	34	12.5/9.6	10.9/10.5	0.59	11.3/9.1	11.6/11.2	0.54
		+6	22	11.8/9.3	11.3/10.9	0.47	10.5/8.7	12.1/11.6	0.42
		+7	15	11.0/9.0	11.8/11.3	0.37	9.9/8.5	12.4/12.0	0.34

Nominal Airflow: 600 l/s; Face Velocity: 2.19 m/s; Heating Entering Air Temperature: 21°C DB

Rows / Circuit	APD (Pa)	LWT ΔT (°C)	WPD (kPa)	80°C EWT			70°C EWT		
				TC (kW)	LAT (°C)	WF (l/s)	TC (kW)	LAT (°C)	WF (l/s)
1/2	15	-20	14	10.5	35.3	0.13	8.1	32.1	0.10
		-25	8	9.6	34.1	0.09	7.2	30.8	0.07
		-30	5	8.8	33.0	0.07	6.3	29.6	0.05
2/4	29	-20	11	17.7	45.2	0.22	13.7	39.8	0.17
		-25	6	16.4	43.4	0.16	12.3	37.8	0.12
		-30	4	14.9	41.3	0.12	10.8	35.7	0.09

Forward Curved Fan: Static Pressure = External Static Pressure + Filters Pressure Drop + Coil Air Pressure Drop



Alternative fans are available for higher static pressure. Please email enquiry to sales representatives.

SWL (dB) at High Speed	Airflow	125 Hz	250 Hz	500 Hz	1000 Hz	2000 Hz	4000 Hz	8000 Hz	dBA
	500	60	68	65	70	68	67	59	75
600	59	68	67	71	70	69	61	76	

Nominal Fan & Motor Data: SYZ9-9l; 0.45 kW; 4 Pole; 5.6 A; 240/1/50

Nomenclature

Total Cooling Capacity (kW): TC
 Sensible Cooling Capacity (kW): SC
 Total/Sensible Heating Capacity (kW): HC
 Horizontal: HZ
 Vertical: VT

Water Flow (l/s): WF
 Water Pressure Drop (kPa): WPD
 Entering Water Temperature (°C): EWT
 Ducted: DT
 Double Skin: EX

Air Pressure Drop (Pa): APD
 Leaving Air Temperature (°C DB / °C WB): LAT
 Sound Power Level (dB): SWL
 25mm or 50mm Polyurethane: PU
 25mm or 50mm Polyethylene: PE

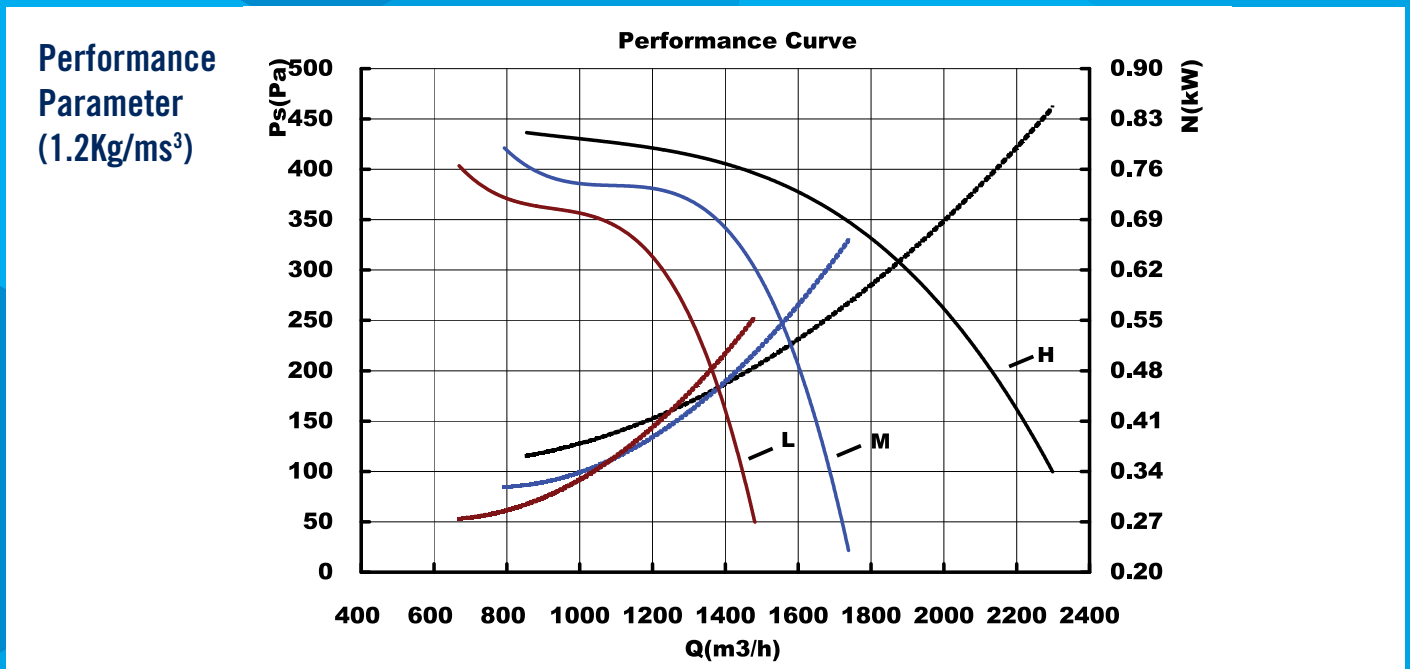
Nominal Airflow: 900 l/s; Face Velocity: 2.21 m/s; Cooling Entering Air Temperature: 24°C DB/17°C WB

Rows / Circuit	APD (Pa)	LWT ΔT (°C)	WPD (kPa)	6°C EWT			7°C EWT		
				TC/SC (kW)	LAT (°C)	WF (l/s)	TC/SC (kW)	LAT (°C)	WF (l/s)
3/8	68	+5	22	11.9/10.2	14.7/13.0	0.57	10.8/9.7	15.2/13.4	0.52
		+6	14	11.0/9.8	15.1/13.4	0.44	10.0/9.4	15.5/13.7	0.40
		+7	9	10.2/9.5	15.4/13.6	0.35	8.7/8.7	16.1/14.2	0.30
4/8	91	+5	37	14.7/12.0	13.1/12.0	0.66	13.6/11.5	13.5/12.4	0.65
		+6	27	14.0/11.7	13.4/12.3	0.56	12.5/11.1	13.9/12.8	0.50
		+7	18	13.1/11.3	13.7/12.6	0.45	11.7/10.7	14.2/13.1	0.40
6/12	136	+5	34	18.7/14.4	10.9/10.5	0.89	16.9/13.6	11.6/11.2	0.80
		+6	21	17.4/13.8	11.4/11.0	0.69	15.7/13.1	12.1/11.6	0.62
		+7	14	16.4/13.4	11.8/11.4	0.56	14.6/12.7	12.5/12.0	0.50

Nominal Airflow: 900 l/s; Face Velocity: 2.21 m/s; Heating Entering Air Temperature: 21°C DB

Rows / Circuit	APD	LWT ΔT (°C)	WPD (kPa)	80°C EWT			70°C EWT		
				TC (kW)	LAT (°C)	WF (l/s)	TC (kW)	LAT (°C)	WF (l/s)
1/2	15	-20	29	15.5	35.1	0.17	12.6	32.5	0.15
		-25	22	14.9	34.6	0.15	11.4	31.3	0.11
		-30	14	13.7	33.4	0.11	9.9	30.0	0.08
2/4	30	-20	28	26.9	45.4	0.32	21.0	40.1	0.26
		-25	18	25.3	44.0	0.25	19.2	38.4	0.19
		-30	11	23.3	42.2	0.19	17.0	36.5	0.14

Forward Curved Fan: Static Pressure = External Static Pressure + Filters Pressure Drop + Coil Air Pressure Drop



Alternative fans are available for higher static pressure. Please email enquiry to sales representatives.

SWL (dB) at High Speed	Airflow	125 Hz	250 Hz	500 Hz	1000 Hz	2000 Hz	4000 Hz	8000 Hz	dBA
	700	66	72	70	73	72	70	65	79
900	64	71	70	74	73	71	67	79	

Nominal Fan & Motor Data: SYZ9-7III x2; 0.375x2 kW; 4 Pole; 4.2x2 A; 240/1/50

Nomenclature

Total Cooling Capacity (kW): TC
 Sensible Cooling Capacity (kW): SC
 Total/Sensible Heating Capacity (kW): HC
 Horizontal: HZ
 Vertical: VT

Water Flow (l/s): WF
 Water Pressure Drop (l/s): WPD
 Entering Water Temperature (°C): EWT
 Ducted: DT
 Double Skin: EX

Air Pressure Drop (Pa): APD
 Leaving Air Temperature (°C DB / °C WB): LAT
 Sound Power Level (dB): SWL
 25mm or 50mm Polyurethane: PU
 25mm or 50mm Polyethylene: PE

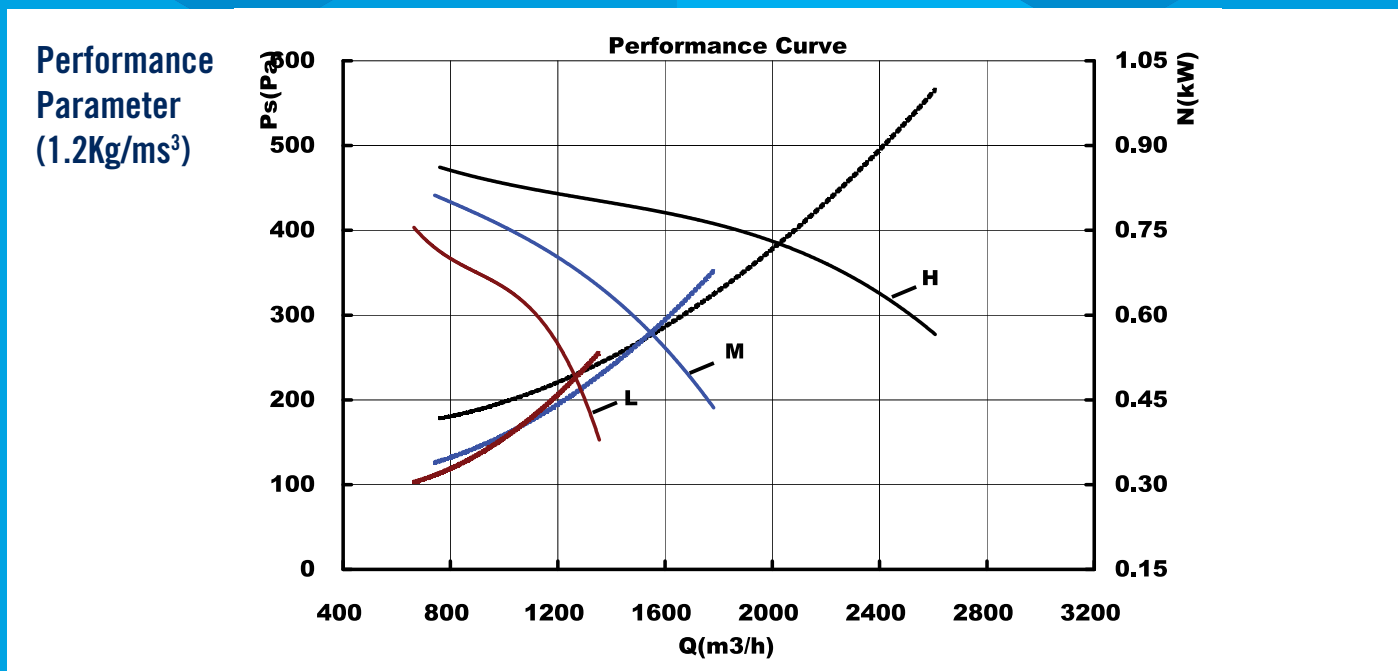
Nominal Airflow: 1200 l/s; Face Velocity: 2.23 m/s; Cooling Entering Air Temperature: 24°C DB/17°C WB

Rows / Circuit	APD (Pa)	LWT ΔT (°C)	WPD (kPa)	6°C EWT			7°C EWT		
				TC/SC (kW)	LAT (°C)	WF (l/s)	TC/SC (kW)	LAT (°C)	WF (l/s)
3/12	69	+5	17	15.6/13.5	14.8/13.1	0.74	13.9/12.7	15.3/13.6	0.66
		+6	10	14.4/13.0	15.2/13.4	0.57	12.1/12.1	15.8/14.0	0.48
		+7	6	13.2/12.5	15.5/13.8	0.45	11.3/11.3	16.3/14.2	0.39
4/16	92	+5	16	18.7/15.6	13.4/12.3	0.89	16.8/14.8	13.9/12.8	0.80
		+6	10	17.4/15.1	13.7/12.6	0.69	15.5/14.3	14.2/13.1	0.62
		+7	6	15.9/14.5	14.1/13.0	0.54	13.5/13.5	14.8/13.7	0.46
6/16	138	+5	31	24.3/18.9	11.1/10.7	1.09	22.3/18.1	11.7/11.2	1.06
		+6	23	23.3/18.5	11.4/11.0	0.92	20.9/17.5	12.1/11.6	0.83
		+7	15	21.9/17.9	11.8/11.4	0.74	19.5/16.9	12.5/12.0	0.66

Nominal Airflow: 1200 l/s; Face Velocity: 2.23 m/s; Heating Entering Air Temperature: 21°C DB

Rows / Circuit	APD (Pa)	LWT ΔT (°C)	WPD (kPa)	80°C EWT			70°C EWT		
				TC (kW)	LAT (°C)	WF (l/s)	TC (kW)	LAT (°C)	WF (l/s)
1/4	15	-20	13	20.9	35.3	0.26	16.0	31.9	0.20
		-25	7	19.3	34.1	0.19	14.3	30.8	0.14
		-30	4	17.6	33.0	0.14	12.3	29.4	0.10
2/8	30	-20	9	35.1	45.0	0.43	27.2	39.6	0.33
		-25	5	32.4	43.1	0.32	24.1	37.5	0.24
		-30	3	29.7	41.3	0.24	21.3	35.5	0.17

Forward Curved Fan: Static Pressure = External Static Pressure + Filters Pressure Drop + Coil Air Pressure Drop



Alternative fans are available for higher static pressure. Please email enquiry to sales representatives.

SWL (dB) at High Speed	Airflow	125 Hz	250 Hz	500 Hz	1000 Hz	2000 Hz	4000 Hz	8000 Hz	dB(A)
	1000	63	71	68	73	71	70	62	78
1200	62	71	70	74	73	72	64	79	

Nominal Fan & Motor Data: SYZ9-9l x2; 0.45x2 kW; 4 Pole; 5.6x2 A; 240/1/50

Nomenclature

Total Cooling Capacity (kW): TC
 Sensible Cooling Capacity (kW): SC
 Total/Sensible Heating Capacity (kW): HC
 Horizontal: HZ
 Vertical: VT

Water Flow (l/s): WF
 Water Pressure Drop (kPa): WPD
 Entering Water Temperature (°C): EWT
 Ducted: DT
 Double Skin: EX

Air Pressure Drop (Pa): APD
 Leaving Air Temperature (°C DB / °C WB): LAT
 Sound Power Level (dB): SWL
 25mm or 50mm Polyurethane: PU
 25mm or 50mm Polyethylene: PE

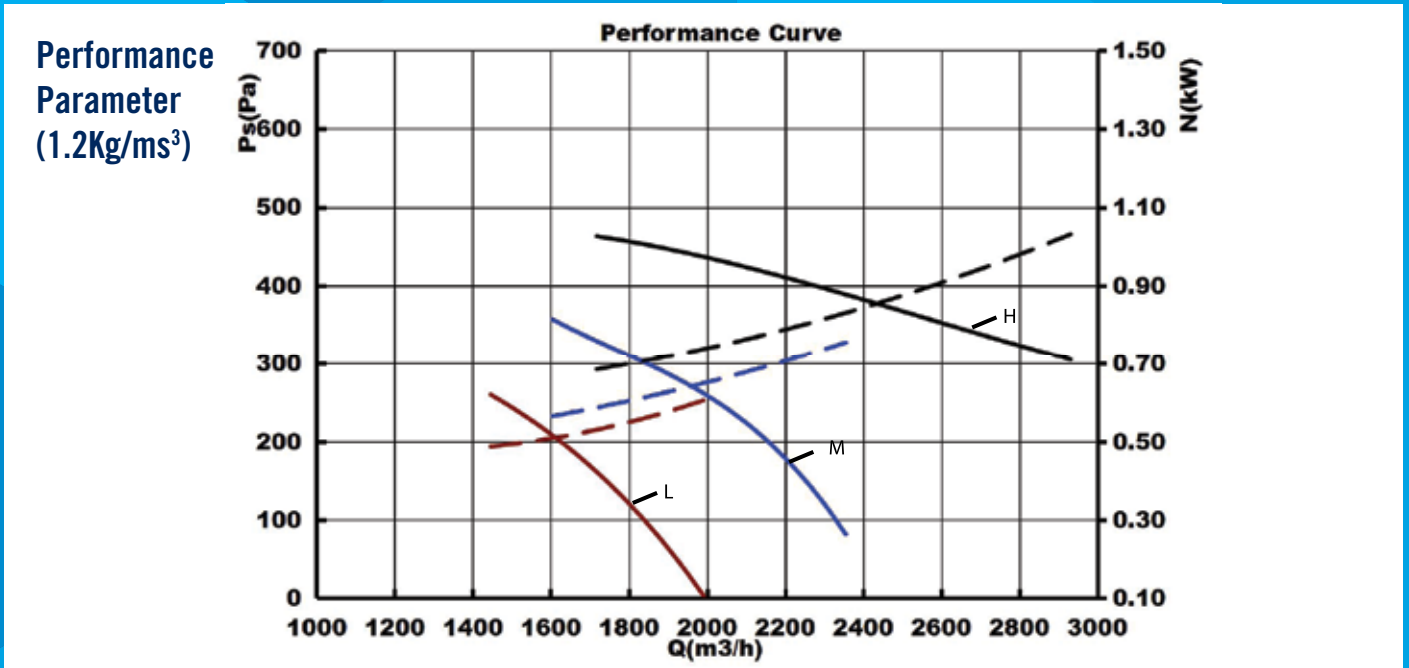
Nominal Airflow: 1500 l/s; Face Velocity: 2.34 m/s; Cooling Entering Air Temperature: 24°C DB/17°C WB

Rows / Circuit	APD (Pa)	LWT ΔT (°C)	WPD (kPa)	6°C EWT			7°C EWT		
				TC/SC (kW)	LAT (°C)	WF (l/s)	TC/SC (kW)	LAT (°C)	WF (l/s)
3/12	75	+5	28	19.5/16.7	14.9/13.1	0.93	17.7/16.0	15.3/13.5	0.84
		+6	17	18.2/16.2	15.2/13.4	0.72	16.4/15.5	15.5/13.8	0.65
		+7	11	16.8/15.7	15.5/13.7	0.57	14.3/14.3	16.2/14.2	0.49
4/16	100	+5	27	23.7/19.6	13.3/12.2	1.13	21.2/18.6	13.9/12.7	1.01
		+6	17	21.8/18.8	13.7/12.6	0.87	19.8/18.0	14.2/13.0	0.79
		+7	11	20.3/18.2	14.1/12.9	0.69	18.4/17.4	14.5/13.3	0.63
6/24	150	+5	16	29.8/23.4	11.3/10.8	1.42	26.9/22.1	12.0/11.5	1.28
		+6	10	27.7/22.5	11.7/11.3	1.10	24.7/21.2	12.4/12.0	0.98
		+7	7	26.0/21.7	12.1/11.7	0.88	23.3/20.6	12.7/12.3	0.79

Nominal Airflow: 1500 l/s; Face Velocity: 2.34 m/s; Heating Entering Air Temperature: 21°C DB

Rows / Circuit	APD	LWT ΔT (°C)	WPD (kPa)	80°C EWT			70°C EWT		
				TC (kW)	LAT (°C)	WF (l/s)	TC (kW)	LAT (°C)	WF (l/s)
1/4	16	-20	20.6	25.8	35.1	0.32	20.0	31.9	0.24
		-25	11.7	23.6	33.9	0.23	17.9	30.8	0.18
		-30	7.1	21.5	32.8	0.18	15.4	29.4	0.13
2/8	33	-20	15.5	43.9	45.0	0.54	33.7	39.4	0.41
		-25	8.9	40.5	43.1	0.40	30.5	37.7	0.30
		-30	5.4	37.2	41.3	0.30	26.7	35.5	0.22

Forward Curved Fan: Static Pressure = External Static Pressure + Filters Pressure Drop + Coil Air Pressure Drop



Alternative fans are available for higher static pressure. Please email enquiry to sales representatives.

SWL (dB) at High Speed	Airflow	125 Hz	250 Hz	500 Hz	1000 Hz	2000 Hz	4000 Hz	8000 Hz	dBA
	1300		62	72	69	74	73	73	65
1500		61	70	69	75	74	73	66	80

Nominal Fan & Motor Data: SYZ10-10II x2; 0.55x2 kW; 4 Pole; 4.9x2 A; 240/1/50

Nomenclature

Total Cooling Capacity (kW): TC
 Sensible Cooling Capacity (kW): SC
 Total/Sensible Heating Capacity (kW): HC
 Horizontal: HZ
 Vertical: VT

Water Flow (l/s): WF
 Water Pressure Drop (l/s): WPD
 Entering Water Temperature (°C): EWT
 Ducted: DT
 Double Skin: EX

Air Pressure Drop (Pa): APD
 Leaving Air Temperature (°C DB / °C WB): LAT
 Sound Power Level (dB): SWL
 25mm or 50mm Polyurethane: PU
 25mm or 50mm Polyethylene: PE

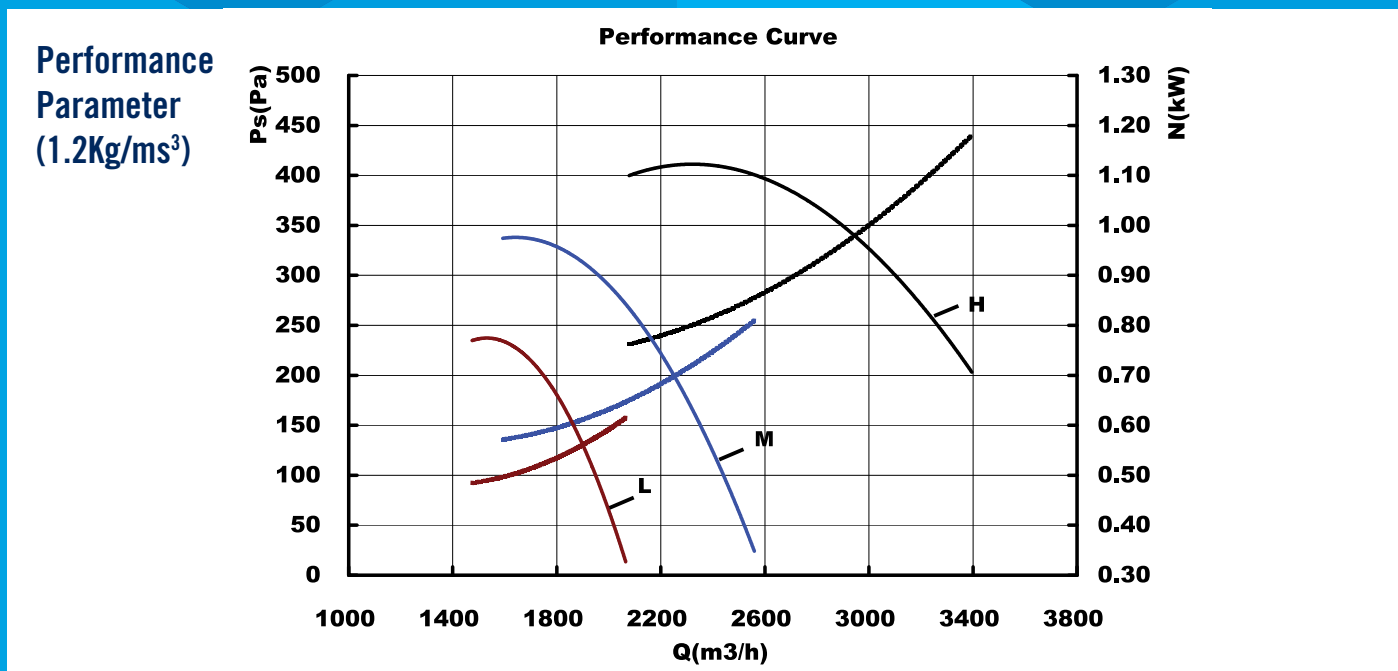
Nominal Airflow: 1800 l/s; Face Velocity: 2.25 m/s; Cooling Entering Air Temperature: 24°C DB/17°C WB

Rows / Circuit	APD (Pa)	LWT ΔT (°C)	WPD (kPa)	6°C EWT			7°C EWT		
				TC/SC (kW)	LAT (°C)	WF (l/s)	TC/SC (kW)	LAT (°C)	WF (l/s)
3/15	70	+5	30	23.9/20.4	14.7/13.0	1.14	21.6/19.4	15.2/13.4	1.03
		+6	18	22.0/19.6	15.1/13.4	0.87	19.9/18.8	15.5/13.7	0.79
		+7	12	20.7/19.1	15.3/13.6	0.70	17.4/17.4	16.1/14.2	0.59
4/20	93	+5	20	28.9/23.8	13.2/12.1	1.38	25.9/22.5	13.8/12.7	1.23
		+6	12	26.6/22.8	13.6/12.5	1.06	24.0/21.7	14.1/13.0	0.95
		+7	8	24.8/22.1	14.0/12.9	0.84	22.3/21.0	14.4/13.3	0.76
6/20	140	+5	39	37.0/28.6	11.0/10.6	1.63	34.4/27.4	11.5/11.1	1.64
		+6	30	35.8/28.1	11.2/10.8	1.42	32.2/26.5	11.9/11.5	1.28
		+7	20	33.5/27.1	11.7/11.2	1.14	30.1/25.7	12.3/11.9	1.02

Nominal Airflow: 1800 l/s; Face Velocity: 2.25 m/s; Heating Entering Air Temperature: 21°C DB

Rows / Circuit	APD (Pa)	LWT ΔT (°C)	WPD (kPa)	80°C EWT			70°C EWT		
				TC (kW)	LAT (°C)	WF (l/s)	TC (kW)	LAT (°C)	WF (l/s)
1/5	15	-20	21	31.4	35.3	0.39	24.4	32.1	0.30
		-25	12	29.4	34.4	0.29	21.9	31.0	0.21
		-30	7	26.4	33.0	0.22	18.9	29.6	0.15
2/10	30	-20	16	53.2	45.2	0.65	41.2	39.8	0.50
		-25	9	49.7	43.6	0.49	37.0	37.8	0.36
		-30	6	45.6	41.7	0.37	32.8	35.9	0.27

Forward Curved Fan: Static Pressure = External Static Pressure + Filters Pressure Drop + Coil Air Pressure Drop



Alternative fans are available for higher static pressure. Please email enquiry to sales representatives.

SWL (dB) at High Speed	Airflow	125 Hz	250 Hz	500 Hz	1000 Hz	2000 Hz	4000 Hz	8000 Hz	dB(A)
	1600	56	63	62	65	64	62	53	71
1800	54	60	63	64	63	60	51	69	

Nominal Fan & Motor Data: SYZ10-10I x2; 0.55x2 kW; 4 Pole; 4.9x2 A; 240/1/50

Nomenclature

Total Cooling Capacity (kW): TC
Sensible Cooling Capacity (kW): SC
Total/Sensible Heating Capacity (kW): HC
Horizontal: HZ
Vertical: VT

Water Flow (l/s): WF
Water Pressure Drop (l/s): WPD
Entering Water Temperature (°C): EWT
Ducted: DT
Double Skin: EX

Air Pressure Drop (Pa): APD
Leaving Air Temperature (°C DB / °C WB): LAT
Sound Power Level (dB): SWL
25mm or 50mm Polyurethane: PU
25mm or 50mm Polyethylene: PE



GJ. WALKER
Air Handling Systems

Victorian Head Office

6-10 Souffi Place
Dandenong South VIC 3175
Ph: +61 3 9706 6313
Fax: +61 3 9706 6232

Queensland Office

Unit 4, 53-57 Link Drive,
Yatala Qld 4207
Ph: +61 7 3804 6833

New South Wales Office

23a/70 Holbeche Road
Arndell Park NSW 2148
Ph: +61 2 8968 9347
Fax: +61 2 8968 9313

Western Australia Office

Integrity House, 67 Howe Street
Osborne Park, WA 6071
Ph: +61 8 9202 6821
M: +61 (0) 459 995 950

www.gjwalker.com.au